



142 Newman Road, Sheffield, S9 1LS

Saxton Mee

142 Newman Road

Asking Price

£140,000

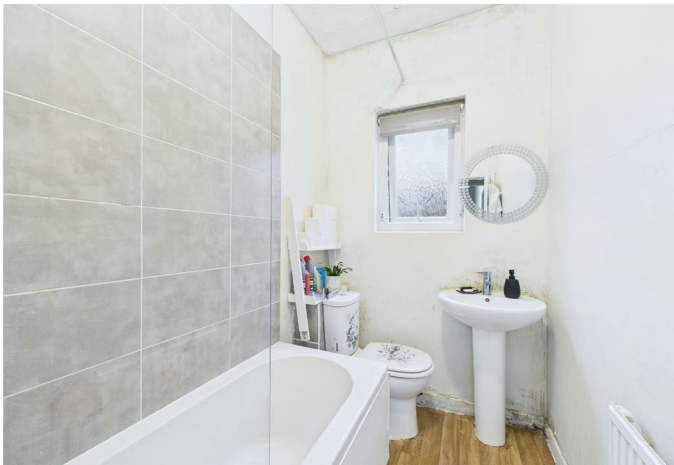
This presents an outstanding investment opportunity to acquire a substantial three bedroom mid terrace property, superbly positioned for commuters and working professionals, offering swift and easy access to the M1 motorway network, the extensive retail amenities at Meadowhall, and the vibrant Sheffield City Centre. Ensuring year round comfort and energy efficiency, the home is fully equipped with gas central heating and uPVC double glazing throughout.

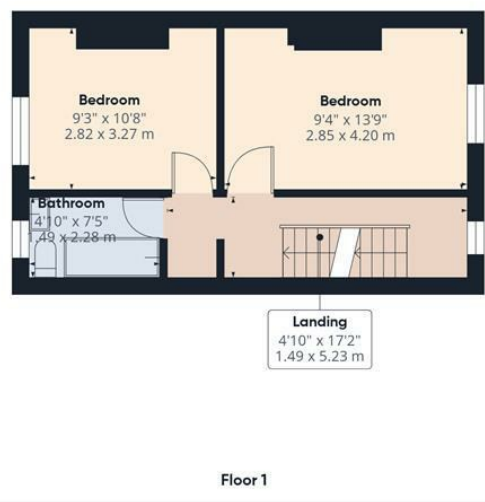
The interior is well-maintained with gas central heating and uPVC double glazing, featuring a layout that includes an entrance hall, a separate living room, a dining room, and a stylish, newly fitted kitchen. Sleeping accommodation is generous, comprising two double bedrooms and a family bathroom on the first floor, plus a spacious dormer double bedroom in the attic conversion. A private courtyard garden is located at the rear, completing this excellent addition to any property portfolio.



- Substantial three-bedroom investment property sold with tenants in situ.
- Generates a steady rental income of £950 per calendar month.
- Prime location for the M1, Meadowhall, and Sheffield City Centre.
- Features two reception rooms and a newly fitted, stylish kitchen.
- Includes three spacious double bedrooms, including a large attic dormer.
- Equipped with gas central heating and uPVC double glazing throughout.
- Tenure: Freehold Council Tax A
- Viewings Via Banner Cross Office







Approximate total area⁽¹⁾
 904 ft²
 83.7 m²

Reduced headroom
 15 ft²
 1.4 m²

(1) Excluding balconies and terraces

Reduced headroom
 Below 5 ft/1.5 m

Calculations reference the RICS IPMS 3C standard. Measurements are approximate and not to scale. This floor plan is intended for illustration only.

GIRAFFE360

While we endeavour to make our sales particulars fair, accurate and reliable, they are only a general guide to the property and, accordingly, if there is any point, which is of particular importance to you, please contact the relevant office. The Agents have not tested any apparatus, equipment, fittings or services and so cannot verify they are in working order. The buyer is advised to obtain verification. Please note all the measurement details are approximate and should not be relied upon as exact. All plans, floor plans and maps are for guidance purposes only and are not to scale. Under no circumstances should they be relied upon as exact or for use in planning carpets and other such fixtures, fittings or furnishings. YOUR HOME IS AT RISK IF YOU DO NOT KEEP UP REPAYMENTS ON A MORTGAGE OR OTHER LOAN SECURED ON IT. 'A Life Assurance policy may be requested.' 'Written Quotations of credit terms available on request.'

Banner Cross
 T: 0114 268 3241
 E: bannercross@saxtonmee.co.uk
www.saxtonmee.co.uk

Hathersage
 T: 01433 650009
 E: hathersage@saxtonmee.co.uk

Bakewell
 T: 01629 815307
 E: bakewell@saxtonmee.co.uk

Matlock
 T: 01629 828250
 E: matlock@saxtonmee.co.uk

